

BCM-6A

The BCM-6A Notification Appliance Circuit Module is included as standard equipment in every FC-72 series control panel. Its functions are to supervise the alarm relay and provide supervision of the notification appliance circuit field wiring for grounds, breaks and short circuit conditions. Should a fault occur, audible and visual system trouble indicators will be actuated.

TCM-6

The TCM-6 Temporal Coder Module is an optional module which can be used to replace the BCM-6 series module in the FC-72 series control panel. In addition to providing all the supervisory functions of the BCM-6 series, the TCM-6 will sound the notification appliance circuits in the Temporal Pattern Audible Emergency Evacuation Signal per ANSI S3.41

CCM-6

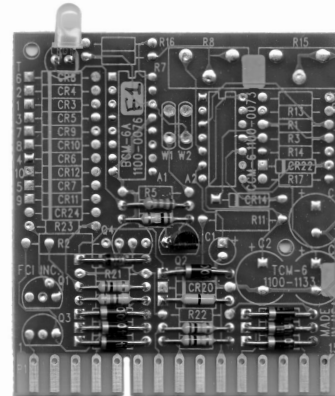
The CCM-6 Common Coder Module is an optional module which can also be used in place of the BCM-6 series module. In addition to providing all the supervisory functions of the BCM-6 series module, it gives the FC-72 system the capability of generating a wide variety of common-coded signals. Any repeatable code composed of up to ten (10) sequential pulses may be selected, and can be programmed at either factory or field level.

The CCM-6 module also provides a field-adjustable signaling rate, and a selectable/field-adjustable time limit cutoff. The pulse duration is 0.25 second to 1.5 seconds (max.) at 50% duty cycle.

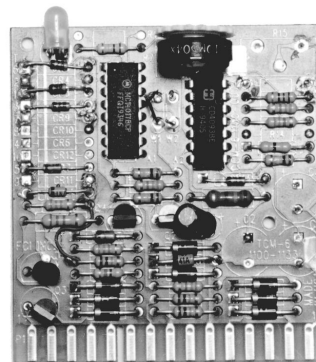
NOTE: When adjusting time limit cutoff, the common coded alarm signal shall be of not less than three rounds duration in order to comply with the National Fire Alarm Code, NFPA 72.

ORDERING INFORMATION

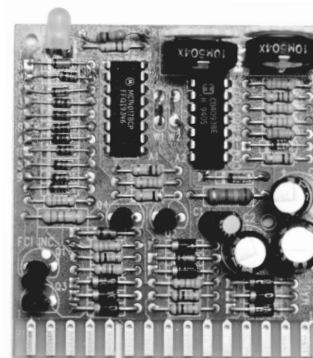
Part No.	Model	Description
1100-0076	BCM-6A	Notification Appliance Circuit Module
1100-1133	TCM-6	Temporal Code Module
1100-0073	CCM-6	Common Coder Module



BCM-6A Notification Appliance Circuit Module



TCM-6 Temporal Pattern Coder Module



CCM-6 Common Coder Module