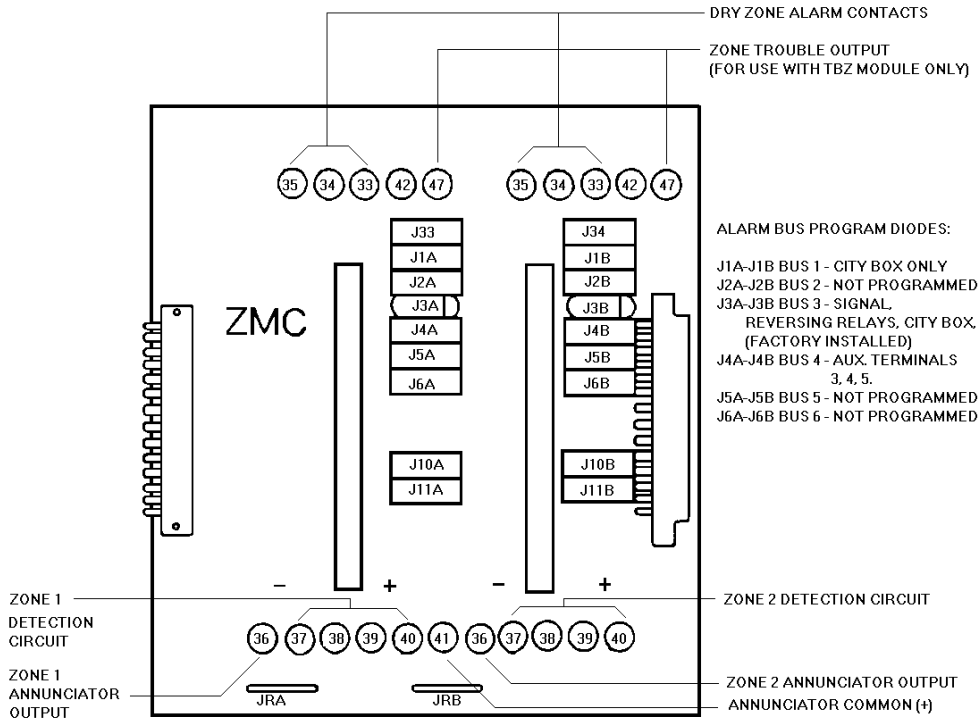
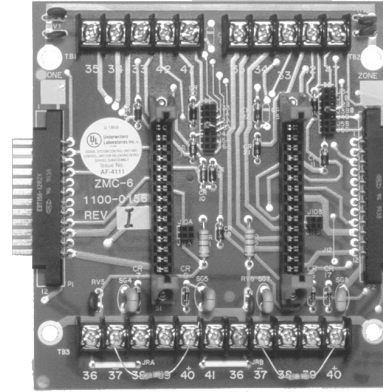


DESCRIPTION

The ZMC-6 Zone Mother Card is used to expand FC-72 series controls to accept additional initiating zones.

Mounted on each ZMC-6 are polarized connectors which will accept up to two initiating modules, and high barrier terminal strips which are easily accessible for the connection of field wiring.

A sophisticated jumper matrix on the ZMC-6 allows each zone to be independently programmed for pre-signaling, selective signaling, special annunciation, and trouble-by-zone with optional TBZ Module. (Trouble-by-module with ZDM-D).



Specifications are provided for information only and are believed to be accurate. However, no responsibility is assumed by Fire Control Instruments, Inc. for their use. Specifications subject to change without notice.

© 1997 All Rights Reserved